

BRUNETTE FBR 40XHD

Flare Butt Reducer



PERFORMANCE | RELIABILITY | RECOVERY

BRUNETTE 
MACHINERY CO.

BRUNETTE FBR 40XHD

THE BRUNETTE FLARE BUTT REDUCER is designed to convert troublesome logs into valuable timber. Its robust construction reduces maintenance and improves uptime for continual return on investment.

Installing a Brunette Flare Butt Reducer at the start of the production line, will afford many advantages throughout the entire mill, including: improved log handling and sorting, better alignment and log control during scanning.

As well, more accurate curve sawing will occur without influence from the butt flare and, negative effects from conveyor chain transitions during the sawing are minimized.

Reduced wear on tools and lowered maintenance costs will occur as sand and gravel hiding in the bark between the butt flares will be removed by the reducer.

KEY BENEFITS of the Brunette Flare Butt Reducer are:

- Increased recovery
- Accurate scanning and log positioning
- Reduced mill downtime
- Improved curve saw recovery
- Robust construction
- Cleaner chips
- Improved productivity

- **RUGGED MAIN FRAME**
- **EXTREME DUTY LIFTING ARM ASSEMBLY**
- **HEAVY DUTY HOLD DOWN ARM WITH LARGE PIVOT SHAFT**
- **ELECTRIC DRIVE ON HOLD DOWN ARM LOG TURNER & BOTTOM LOG TURNERS**
- **4^{7/16}" DIAMETER LOG KICKER SHAFT**
- **REPLACEABLE CUTTER HEAD SHAFT MOUNTED IN B-LOK**
- **42 FOUR-SIDED CUTTING TOOLS**
- **MAXIMUM 40" DIA LOG WITH 54" DIA BUTT**
- **SHORT LOG SUPPORT**

Pictured below is the custom designed **Brunette Dual Head Flare Butt Reducer**. The FBR-DH has the same solid construction but is equipped with two cutterheads; each with a pivoting mount for 100 HP 1800 RPM electric motor, a set of 42 four-sided knives, a hydraulic cylinder, and a pivoting cutterhead cover.

Contact our **Sales Dept.** for more details.



8717 132 Street, Surrey, BC • sales@brunettemc.com

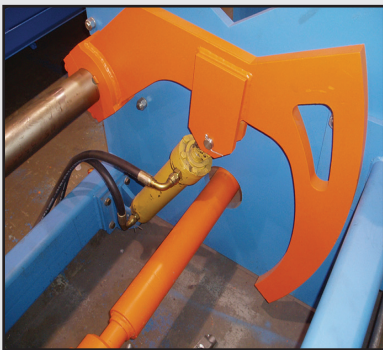
FLARE BUTT REDUCER | Eliminate feeding problems in your mill. All your machine centres will benefit.



◀ GO FROM THIS — TO THIS ▶

It only takes minutes to remove flare butt ends which allows the proper positioning of logs for more accurate feeding. The elimination of bark inclusions in the flare butt results in cleaner chips, improved productivity, reduced downtime and increased recovery.

Increase lumber recovery by turning troublesome logs into valuable timber.



◀ LIFTING ARM ASSEMBLY

The extreme duty lifting arms are mounted with a bottom hub to an oversized 4^{7/16}" diameter shaft.

CHAIN ASSEMBLY ▶

The top and bottom log turning chains are each driven by a 5HP single speed, one gear motor. This electrically driven chain assembly ensures the logs are rotated symmetrically for an evenly reduced flare butt end.

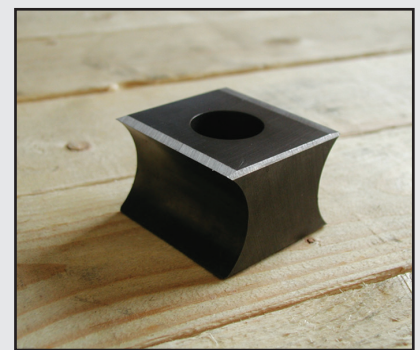


◀ CUTTERHEAD ASSEMBLY

The cutterhead assembly comes complete with 42 four-sided solid steel knives with a protective cover, powered by an 1800 RPM direct drive.

CUTTING TOOL ▶

The four-sided cutting tools typically need to be turned once every 6 weeks. Knives can be turned and sharpened once, using a standard knife grinder. Most mills use two sets of knives per year.



PERFORMANCE ENGINEERED • INCREASED LUMBER RECOVERY

1.800.686.6679 • 1.604.522.3977 • BrunetteMC.com



BRUNETTE FBR 40XHD

Flare Butt Reducer

Increase Lumber Recovery



More Information and brochures
for quality products available at
BrunetteMC.com

DISC SCALPING SCREENS

VOLUMETRIC SCANNERS

FLARE BUTT REDUCERS

HORIZONTAL CHIPPERS

WHOLE LOG CHIPPERS

ROTARY DEBARKERS

veneer CHIPPERS

LOG SINGULATORS

DRUM CHIPPERS

LOG SWEEPS

BIOSIZERS

HOGS



BRUNETTE MACHINERY HEAD OFFICE / CAPITAL SALES

8717 132nd St • Surrey, BC V3W 4P1 CANADA
Office: 604.522.3977 • Toll Free: 1.800.686.6679
sales@brunettemc.com • BrunetteMC.com

BRUNETTE MACHINERY NORTHERN BC DIVISION

1076 Great St • Prince George, BC V2N 2K8 CANADA
Office: 250.563.0596 • Toll Free: 1.800.686.6679
pgoffice@brunettemc.com • BrunetteMC.com

PERFORMANCE | RELIABILITY | RECOVERY

BRUNETTE
MACHINERY CO. 