

# **BRUNETTE Optical Belt Scale** **Volumetric Scanner**



**PERFORMANCE | RELIABILITY | RECOVERY**

**BRUNETTE**  
MACHINERY CO.

# BRUNETTE Optical Belt Scale

**The Brunette Optical Belt Scale** is a contact-free volumetric scanner. Using the latest laser technology, it effectively scans the material crossing the belt with a measurement accuracy of 1mm variance. Whether your conveyor is stationary or on tracked equipment, you can rely on the precise production data unaffected by external conditions. Beyond its practical measurement application, OBS is truly a management tool.

The scale has seamless integration capabilities offering flow rate control and continuous monitoring via a programmable logic controller (PLC) or an in-house BI reporting tool. The connection can be hardwired or configured across a wireless network. Information can be directly downloaded into internal databases

for data mining. This flexibility allows the user to select the method of setup and communication which suits their application best.

The OBS works by measuring volume by using a volume data calculation that produces a 99.8% accurate result.

The OBS' inductive sensor first measures the cross profile of the material on the conveyor belt. Then the sensor measures the feed rate of the conveyor belt.

The cross profile and the feed rate measurements are combined and the resulting material data is readily available in cubic meters, yards, or tonnes. The data is then stored in the sensor for easy download.



## BENEFITS OF THE OPTICAL BELT SCALE

- MEASURES VOLUME WITH 99.8% ACCURACY
- SET GOALS AND PRODUCTION BENCHMARKS
- KNOW EXACTLY WHEN EQUIPMENT IS STARTED AND STOPPED EACH DAY
- INCREASE OPERATION PROFITABILITY
- VERIFY EQUIPMENT PRODUCTIVITY
- MANAGE INVENTORY CONTROLS
- MANAGE MULTIPLE SITES OR REMOTE SITES
- AFTER INITIAL CALIBRATION, THERE IS NO NEED FOR ONGOING RECALIBRATION
- NO MOVING PARTS OR CONTACT AREAS MEANS MINIMAL ONGOING SERVICING REQUIRED

8717 132 Street, Surrey, BC • [sales@brunettemc.com](mailto:sales@brunettemc.com)



# VOLUMETRIC SCANNER

Take control of your fibre supply with the BRUNETTE Optical Belt Scale

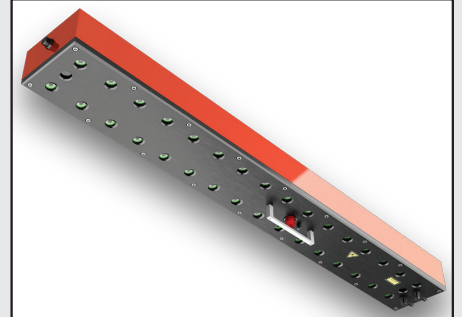


## ◀ MOUNTING FRAME

The fully adjustable aluminum frame is easily installed and accommodates Scale size range from 24" to 78" belt widths.

## VOLUMETRIC SCANNER▶

The inductive sensor uses the latest laser technology to measure material crossing the belt at a rate of 3200 frames/second.



## MEASUREMENT DATA

• Customer  
• Material Type  
• Start of Measurement (time and date)  
• End of Measurement (time and date)  
• Amount of material produced (yd<sup>3</sup>, m<sup>3</sup>, Tonne)  
• Roll diameter (mm)  
• Intervals, specific m<sup>3</sup> per 30 minute interval

customer	material	start of measurement		end of measurement		amount [m <sup>3</sup> ]	roll ø [mm]	m <sup>3</sup> per 30 minutes interval									
								I	II	III	IV	V	VI	VII	VIII	IX	X
AKM	Asphalt	07:09	07.12.2014	12:09	07.12.2014	357,6	280	12,9	43	31,1	28,4	38,7	47,8	35,9	40,3	34,3	45,2
AKM	Asphalt	12:57	07.12.2014	18:15	07.12.2014	363,7	280	13	36,1	33,2	32,8	46,4	21,4	44,1	25,8	29,8	48,9
AKM	Asphalt	06:59	08.12.2014	11:50	08.12.2014	348,3	280	15,4	36	47	31,8	27,3	46,4	29	38,9	38,3	32,5
AKM	Asphalt	13:01	08.12.2014	17:53	08.12.2014	280,4	280	19,3	35	43,1	24	27,8	27,3	20,5	23,3	23,3	28,4
AKM	Asphalt	06:05	11.12.2014	12:00	11.12.2014	409,5	280	15,5	29,3	35,6	22,2	25,5	27,8	25,5	46	45,3	45,3

The Brunette OBS measurement data provides an in-depth quantifiable metric which can help monitor production. This provides the ability to spot performance trends in the data and potentially catch wear part replacements before any operational disruptions.

**RELIABLE PERFORMANCE • UNMATCHED ACCURACY**

1.800.686.6679 • 1.604.522.3977 • BrunetteMC.com

# BRUNETTE Optical Belt Scale Volumetric Scanner

*Take Control of Your Fibre Supply*



More Information and brochures  
for quality products available at  
**BrunetteMC.com**

**DISC SCALPING SCREENS**

**VOLUMETRIC SCANNERS**

**FLARE BUTT REDUCERS**

**HORIZONTAL CHIPPERS**

**WHOLE LOG CHIPPERS**

**ROTARY DEBARKERS**

**VENEER CHIPPERS**

**LOG SINGULATOR**

**DRUM CHIPPERS**

**LOG SWEEPS**

**BIOSIZERS**

**HOGS**



## BRUNETTE MACHINERY HEAD OFFICE / CAPITAL SALES

8717 132nd St • Surrey, BC V3W 4P1 CANADA  
Office: 604.522.3977 • Toll Free: 1.800.686.6679  
sales@brunettemc.com • BrunetteMC.com

## BRUNETTE MACHINERY NORTHERN BC DIVISION

1076 Great St • Prince George, BC V2N 2K8 CANADA  
Office: 250.563.0596 • Toll Free: 1.800.686.6679  
pgoffice@brunettemc.com • BrunetteMC.com

**PERFORMANCE | RELIABILITY | RECOVERY**

**BRUNETTE**  
MACHINERY CO. 