

BRUNETTE Optical Belt Scale Volumetric Scanner



PERFORMANCE | RELIABILITY | RECOVERY

BRUNETTE
MACHINERY CO.



BRUNETTE Optical Belt Scale

The Brunette Optical Belt Scale is a contact-free volumetric scanner. Using the latest laser technology, it effectively scans the material crossing the belt with a measurement accuracy of 1mm variance. Whether your conveyor is stationary or on tracked equipment, you can rely on the precise production data unaffected by external conditions. Beyond its practical measurement application, OBS is truly a management tool.

The scale has seamless integration capabilities offering flow rate control and continuous monitoring via a programmable logic controller (PLC) or an in-house BI reporting tool. The connection can be hardwired or configured across a wireless network. Information can be directly downloaded into internal databases

for data mining. This flexibility allows the user to select the method of setup and communication which suits their application best.

The OBS works by measuring volume by using a volume data calculation that produces a 99.8% accurate result.

The OBS' inductive sensor first measures the cross profile of the material on the conveyor belt. Then the sensor measures the feed rate of the conveyor belt.

The cross profile and the feed rate measurements are combined and the resulting material data is readily available in cubic meters, yards, or tonnes. The data is then stored in the sensor for easy download.



BENEFITS OF THE OPTICAL BELT SCALE

- MEASURES VOLUME WITH 99.8% ACCURACY
- SET GOALS AND PRODUCTION BENCHMARKS
- KNOW EXACTLY WHEN EQUIPMENT IS STARTED AND STOPPED EACH DAY
- INCREASE OPERATION PROFITABILITY
- VERIFY EQUIPMENT PRODUCTIVITY
- MANAGE INVENTORY CONTROLS
- MANAGE MULTIPLE SITES OR REMOTE SITES
- AFTER INITIAL CALIBRATION, THERE IS NO NEED FOR ONGOING RECALIBRATION
- NO MOVING PARTS OR CONTACT AREAS MEANS MINIMAL ONGOING SERVICING REQUIRED

8717 132 Street, Surrey, BC • sales@brunettemc.com

VOLUMETRIC SCANNER | Take control of your fibre supply with the BRUNETTE Optical Belt Scale

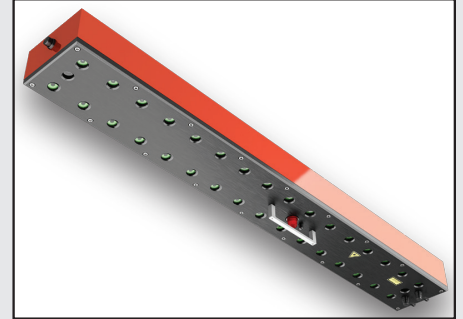


◀ MOUNTING FRAME

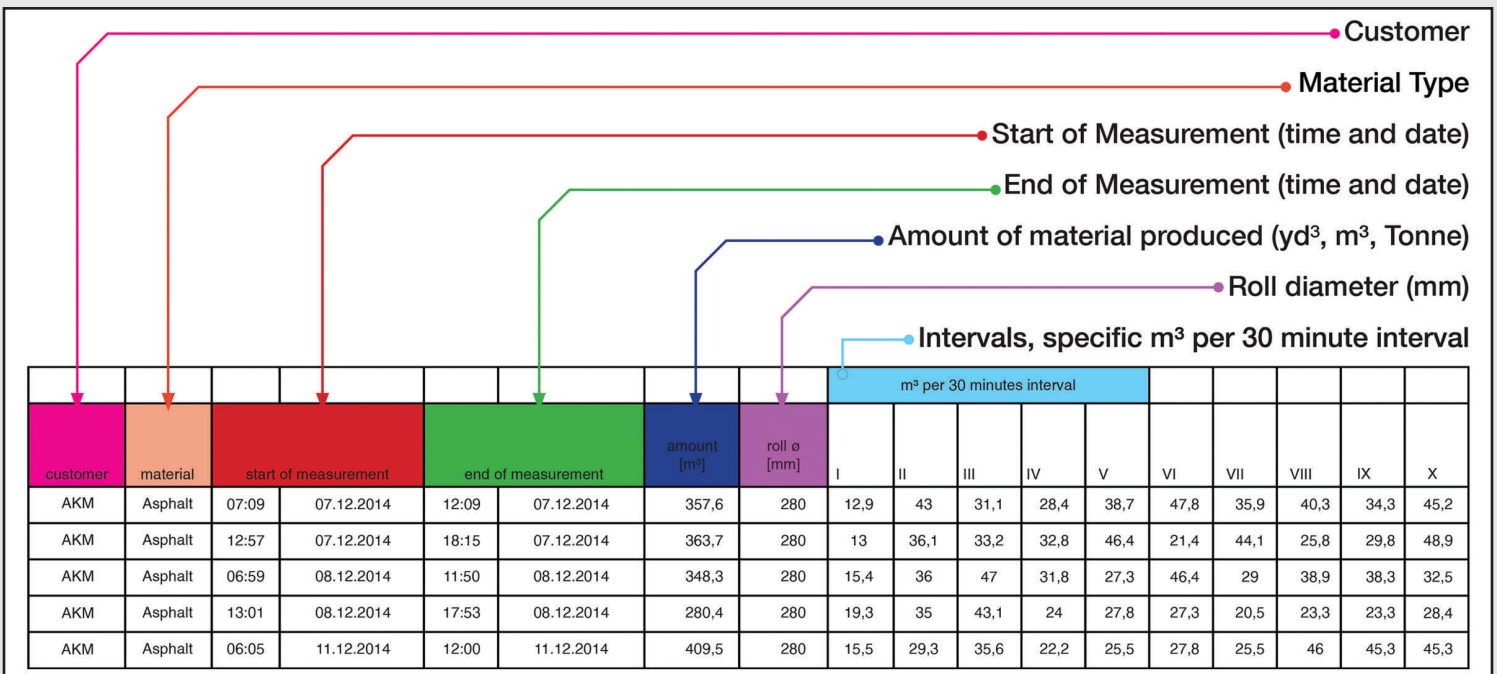
The fully adjustable aluminum frame is easily installed and accommodates Scale size range from 24" to 78" belt widths.

VOLUMETRIC SCANNER ▶

The inductive sensor uses the latest laser technology to measure material crossing the belt at a rate of 3200 frames/second.



MEASUREMENT DATA



The Brunette OBS measurement data provides an in-depth quantifiable metric which can help monitor production. This provides the ability to spot performance trends in the data and potentially catch wear part replacements before any operational disruptions.

RELIABLE PERFORMANCE • UNMATCHED ACCURACY

1.800.686.6679 • 1.604.522.3977 • www.brunettemc.com

BRUNETTE Optical Belt Scale Volumetric Scanner

Take Control of Your Fibre Supply



More Information and brochures for quality products available at
www.brunettemc.com

DISC SCALPING SCREENS

VOLUMETRIC SCANNERS

FLARE BUTT REDUCERS

WHOLE LOG CHIPPERS

ROTARY DEBARKERS

LOG SINGULATORS®

VENEER CHIPPERS

DRUM CHIPPERS

LOG SWEEPS

BIOSIZERS

HOGS



BRUNETTE MACHINERY CO.

HEAD OFFICE / CAPITAL SALES

8717 132nd St • Surrey, BC V3W 4P1 CANADA
Office: 604.522.3977 • Toll Free: 1.800.686.6679
Email: sales@brunettemc.com • www.brunettemc.com

NORTHERN BC DIVISION

1076 Great St • Prince George, BC V2N 2K8 CANADA
Office: 250.563.0596 • Toll Free: 1.800.686.6679
Email: pgoffice@brunettemc.com • www.brunettemc.com

PERFORMANCE | RELIABILITY | RECOVERY

BRUNETTE
MACHINERY Co. 