

GRIZZLY MILL HOG

Is it time to replace your top and bottom anvil liners?

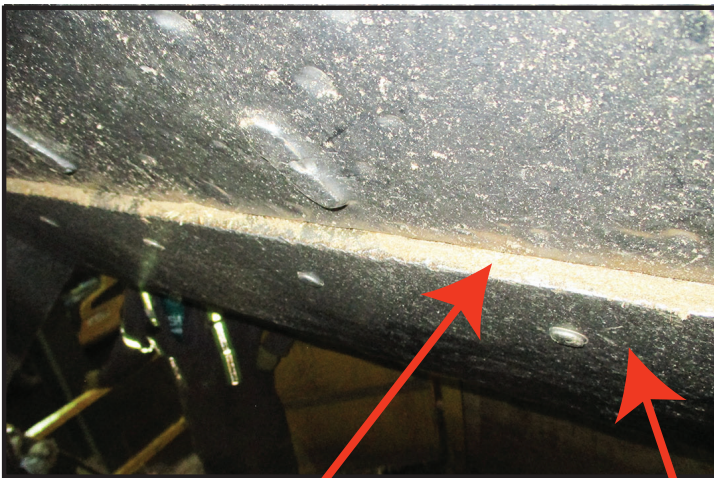


NEW Top & Bottom Anvil Liners



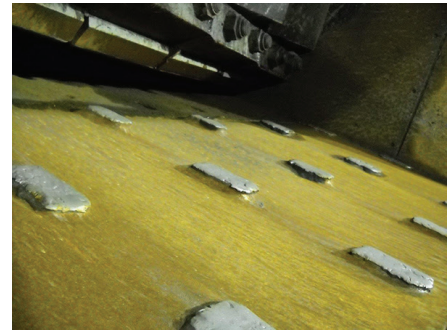
- Top Liner — Weld-On, 1½" Thick
- Bottom Liner — Bolt-On, 1½" Thick

WORN Top & Bottom Anvil Liners



- Replace top liner when lip exceeds ¼"
- Replace bottom liner at ¾" thick

Don't let **THIS** happen to your anvil liners!



WORN Top Anvil Liner



WORN Bottom Anvil Liner

Questions? Call us for more information

QUALITY PARTS & SERVICE

604.522.3977

BRUNETTE MACHINERY Co. 8717 132nd St., Surrey BC • V3W 4P1

PH: 604.522.3977 • FAX: 604.522.6806 • www.brunettemc.com